



ARTS TREE FINE ART SCHOOL, 248 PRESTON ROAD, WYNNUM WEST, 0437146359

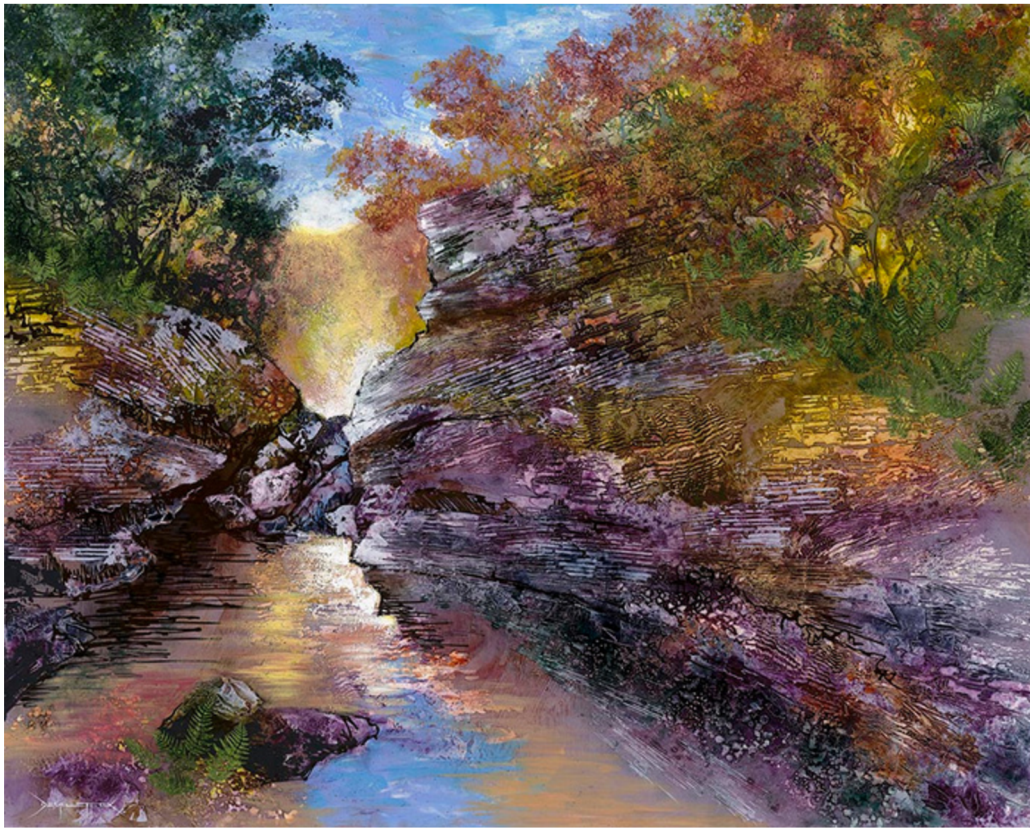
Rocks and Rivers

SEPTEMBER 13TH AND 14TH, 2025

9:00 AM TO 3:00 PM

\$500 PER PERSON (MATERIALS NOT INCLUDED)

TUTOR: DE GILLETT COX.



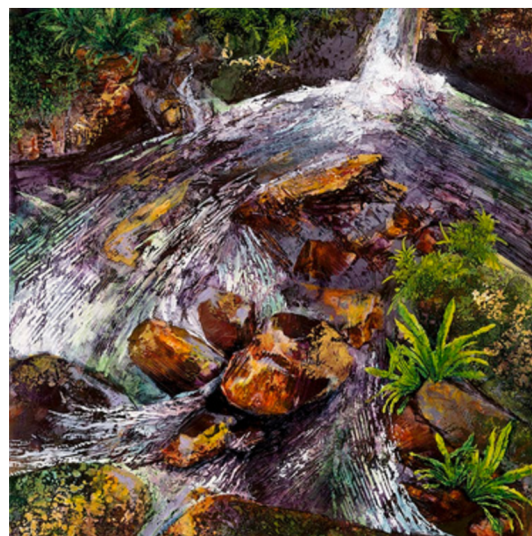
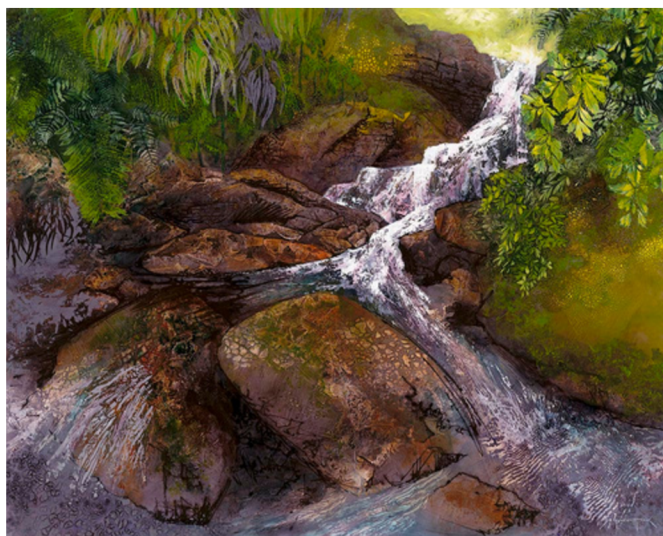
Create a vibrant, textured painting on canvas as you learn the unique techniques developed by De Gillett Cox. The emphasis will be on using Gesso Soup technique to create beautiful boulders
Colour Rubs, Gesso Soup, stencilling, glosing and glazing...

Negative and Positive techniques will be included.

Build your painting in layers, learning about composition and balance. Incorporate patterns and a level of abstraction into creek and rock forms.

Suitable for beginners as well as more experienced artists seeking new techniques or to regain their enthusiasm for making intricate, nuanced, colourful paintings.

Remember we are learning new skills, and although we fully expect you to create a masterpiece (no pressure!) you will not be able to enter your finished work in any competition or exhibition, as it will be done in a tutored workshop with our help.



We will work through the stages with firstly a demonstration from De, then it will be your turn to complete that stage on your canvas with abundant help and guidance from De and her co-tutor Ali. While that is drying, we will move on to the next demonstration, before finally taking home a triumph on canvas!

Materials

- Stretched canvas no larger than 101cm on any side, pre-gessoed with mid-toned dirty purple gesso. (Gesso + Purple + Raw Umber)
- Acrylic paints: Bring what you have, especially transparent and semi-transparent colours. (or you can use the products at Arts Tree for an additional \$30 paid on the day)
- Brushes, Large palette knives
- Jo Sonja Glaze Medium
- Binder medium
- Texture Paste (De prefers Chromacryl brand)
- White Gesso (De prefers Chromacryl brand)
- Painter's masking tape, craft knife & cutting mat
- Large fan brush
- Chux cloth x 6
- Silicon painting wedge and/or large silicon brushes.
- **Printed out** A4 photographs of boulder filled landscapes you wish to paint. We can recommend the Facebook Group "Take a Hike Queensland" as a source of suitable images.

ARTS TREE FINE ART SCHOOL

248 PRESTON ROAD, WYNNUM WEST
0437146359

ONSITE PARKING AT REAR



@artstreecreations



Arts Tree



artstree.com.au