

## My Drawing is Wrong

SATURDAY AUGUST 2ND 2025

9:00 AM TO 3:00 PM

\$275 PER PERSON (MATERIALS NOT INCLUDED)

TUTOR: DE GILLETT COX.

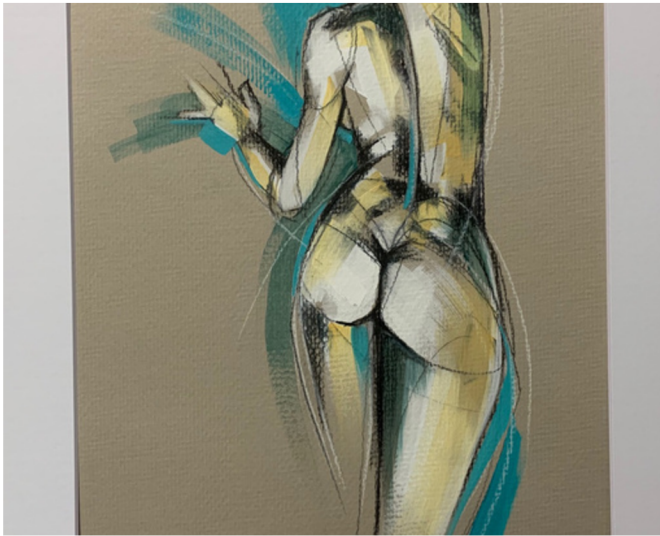


Drawing quickly and well makes painting much, much easier.

Most of drawing well is actually drawing badly and then correcting it, until it's right.

The ability to draw up your subject accurately whether it is a cat, a train or a face is exactly what we will be teaching in this workshop, and you can expect to go home with the strategies of drawing understood. We will be drawing from photographs provided by Arts Tree as we learn and apply:- Thrust, Plumb Lines, Negative and Positive space, Vector of analysis, Tone, Midline and Working from the General Shape to the Particular.

Remember we are learning new skills and you will not be able to enter your finished work in any competition or exhibition, as it will be done in a tutored workshop with our help.



### Materials

- Large sketchbook A2 or A3 size, white, coloured or both.
- Charcoal or soft pastels any colours
- Soft eraser.
- Graphite pencils in 2B, 4B and 6B

## ARTS TREE FINE ART SCHOOL

248 PRESTON ROAD, WYNNUM WEST  
0437146359

**ONSITE PARKING AT REAR**



@artstreecreations



Arts Tree



artstree.com.au