

MIXED MEDIA WORKSHOP - COLLAGE, PAINTING AND DRAWING

TUTOR: De Gillett

\$295.00 per person.



Maximum 10 participants.

9:00 am to 4:00 pm both days.

PLANNING COMPONENT

SUBJECT: Before you set out to doing your artwork(s) you will need to have chosen a subject or a theme to follow.

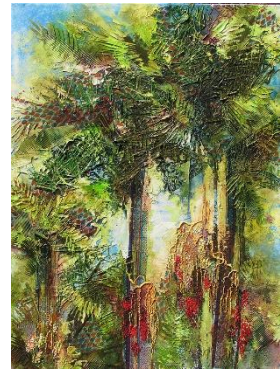
Ideally you will have a photograph of your subject, so that we have guidance in composition and tonal issues.

Once you have chosen your subject you need to compile an assortment of resource materials such as photos, printed images, and black and white photocopies as well as close ups of the texture and

detail you plan to make use of. This is a great workshop for those who need to loosen up their control of their work and not be literal about what they are painting!

For example if you choose fish as your theme or subject you need to have resources in relation to their scales, the environment you will place them in etc., the same applies for birds in that you should pay special attention to their feathers. If you choose landscapes as your subject material you should compile resource material in relation to trees, and their leaves, and the movement of figures or objects in the space. It is very important that you work with texture in the mixed media format.

COMPOSITION: Once you have compiled the resources relevant to your subject you need to plan the composition of your artwork. In this workshop, we are not looking to make an exact copy of a photo but rather an abstraction, making use of the aspects of the chosen theme combined in a creative way. Things to take note of and adhere to are; ensuring that you have a focal point that falls in line with the Golden Ratio using tonal contrast and detail, having a design base and making use of the ever important design elements of repetition, emphasis, movement and variation.



COLLAGE COMPONENT

You should bring with you a variety of materials to use in the collage component, however stick to natural fibers not plastic as plastic is not easily painted over or blended. Use materials such as; textured papers, printed papers (newsprint is great) fabrics that are thin and coarse such as gauze, raffia, string, lace, doilies, dried leaves, thin transparent papers like baking paper, paper napkins or tissue paper and so on.



PAINT COMPONENT

This is where you begin to integrate the collage. Use rollers, stencils, washes of colour. As your painting builds, thicker textures like texture paste will be used.

DRAWING COMPONENT

The use of drawing mediums like charcoal, pastel and pen are a very important part of mixed media artworks.

If you are going to draw with charcoal or pastel over the top of your collage, you will need to first apply a layer of clear pastel primer over the area you intend to draw on. This is to give the surface grip for the drawing medium.

Use willow charcoal to block in your drawings (it is easy to wipe off to make changes if necessary).

Pay attention to tonal contrasts and detail to create focal points and repeat aspects of the theme by using printing, stamping and stencilling.

Once you are happy that your work is complete paint the sides of your canvas and spray varnish to seal in your work.



MATERIALS LIST

1 canvas up to 900mm x 900mm (layer of Gesso already applied);

Reference material: old drawings black and white photocopies, photos, print outs etc. (choose a theme); the more reference material the better!

Old brush to apply binder medium;
Masking tape;

Stencils and a hard roller (brayer) if you have one;

A variety of acrylic brushes (including 2 large, flat, soft hair brushes);

1 Bottle of binder medium;

1 Tub impasto gel medium and/or texture paste;

Glaze medium;

Acrylic paint;

Charcoal and pastels;

Clear (translucent) pastel primer or translucent gesso (Matisse brand is excellent);

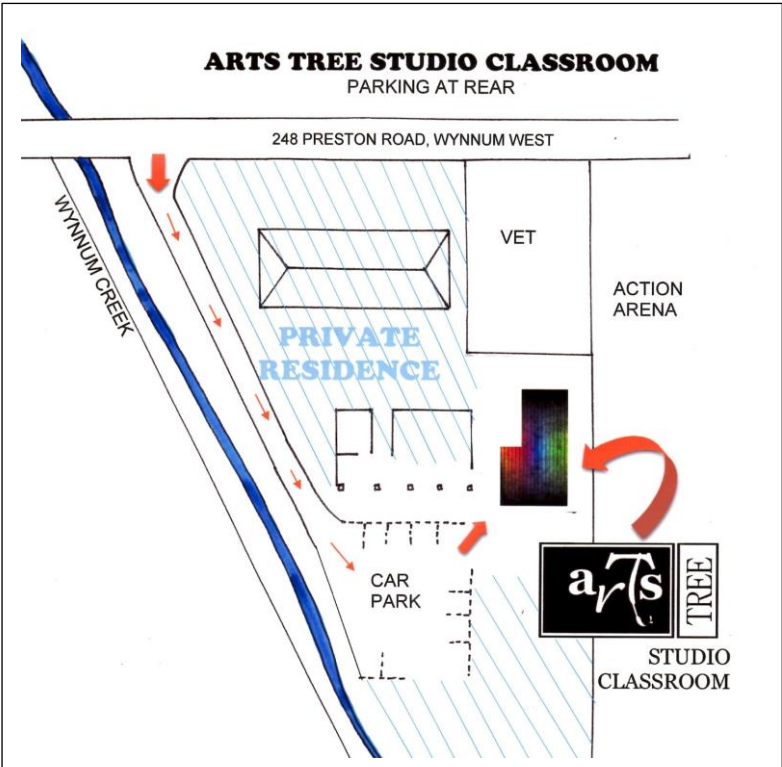
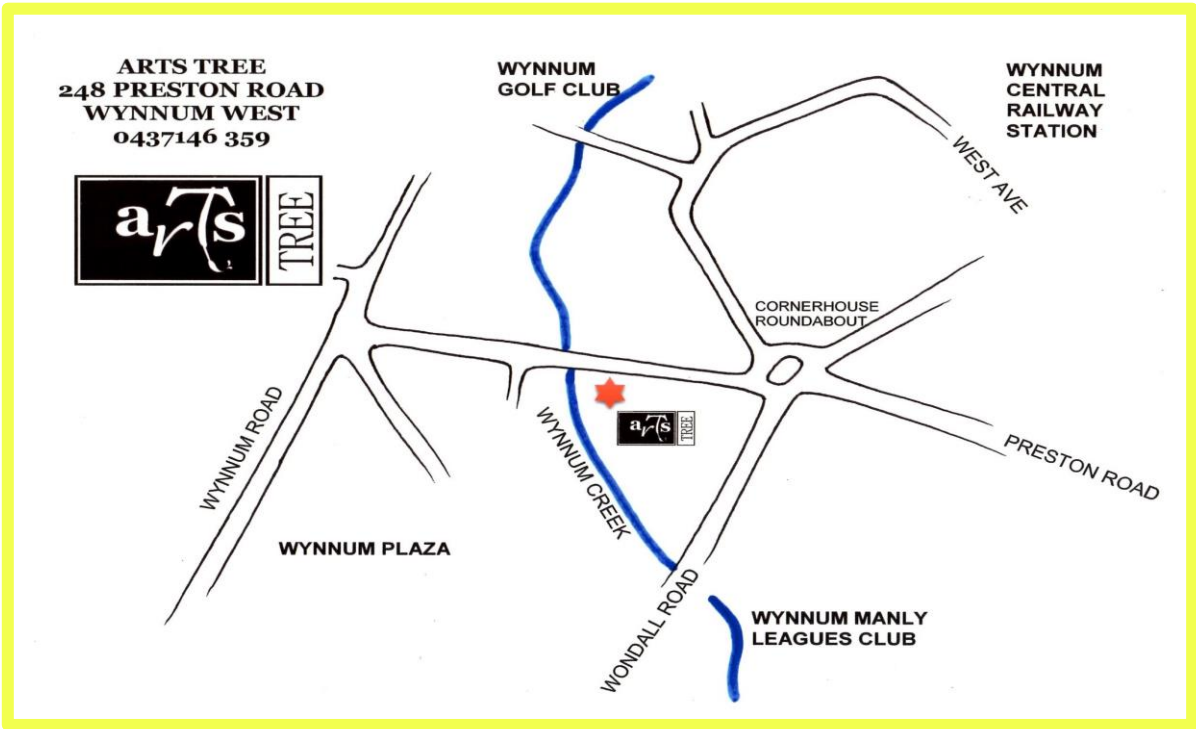
Variety of textured and/or printed papers, fabric, fine corrugated cardboard, White tissue paper (thicker one), lace and doilies and serviettes;

1 Black fine-liner pen;

2 Graphite pencils (2B, 6B);

Fine spray bottle;

The Studio Classroom is stocked with buckets, small mixing bowls and rags.



Here's where you find us!

**248
Preston Road
Wynnum West**

Onsite parking at rear

Gates open 30mins before class

Next door to Wynnum Bayside Vet Clinic & Action Arenas Indoor Sports Centre

Right beside Wynnum Creek

www.artstree.com.au



0437 146 359