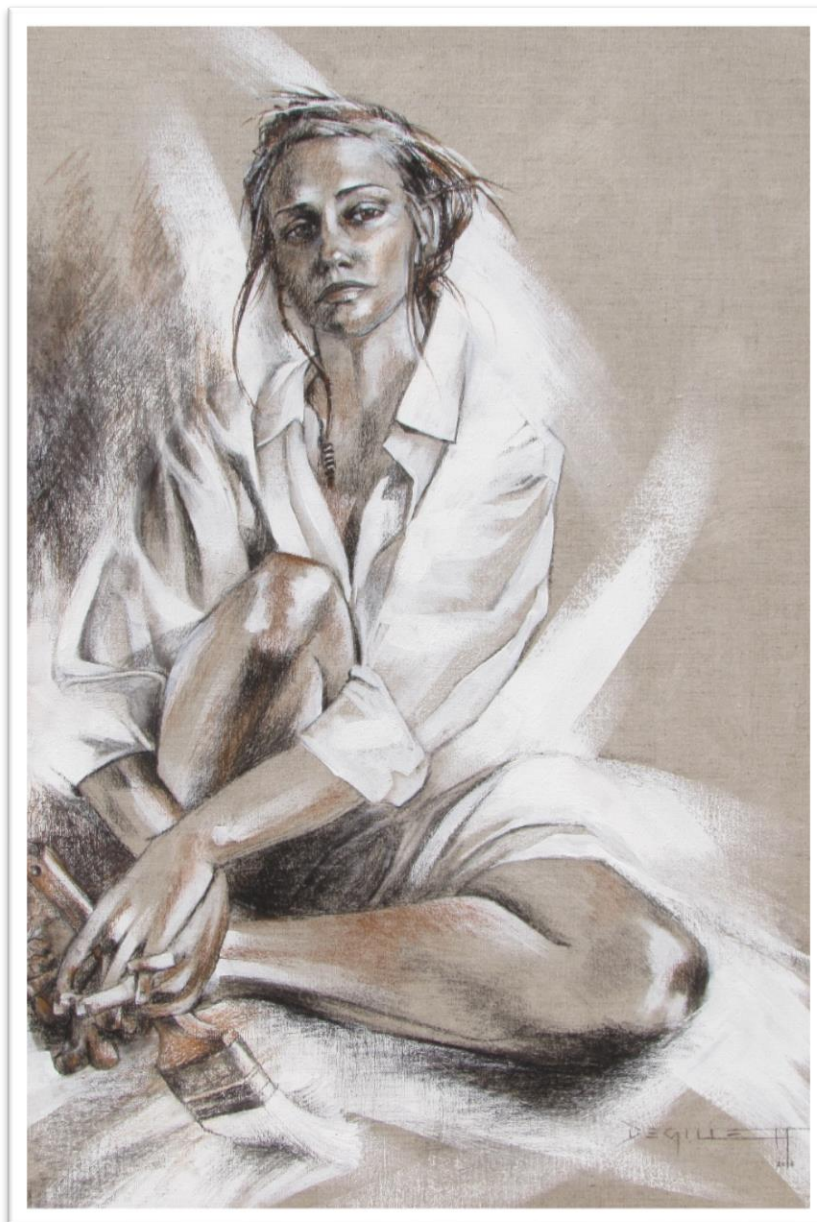


ACRYLICS PORTRAITURE TWO DAY WORKSHOP

TUTOR: De Gillett



\$295.00 per person.

Maximum 10 participants.

9:00 am to 4:00 pm both days.

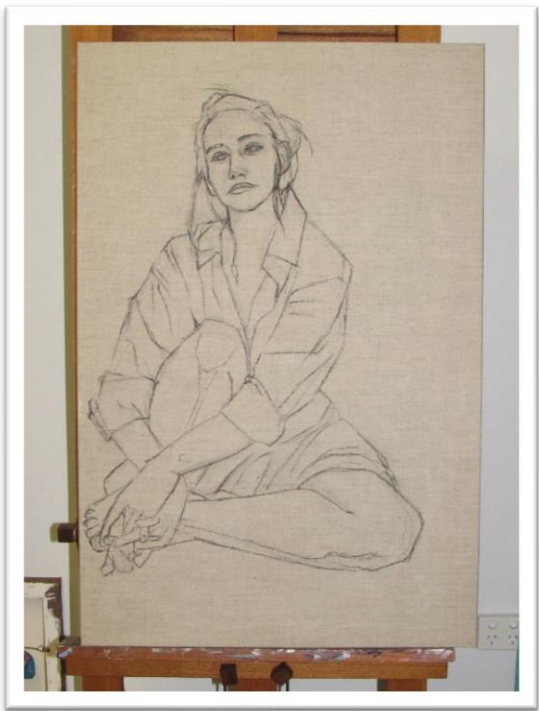
This two day workshop with De covers the development of a portrait using charcoal and acrylic on a linen (or linen-coloured) canvas.

Three distinct methods of drawing up the head will be taught; Drawing from the inside out, Box construction, and Analysis of the photo.

Particular attention will be paid to developing an understanding of the bones of the face and how the skin responds to that structure.

Learn De's self-developed technique of layering drawing media onto canvas, then sealing the surface so that framing under glass is not necessary.

Suitable for moderately and very experienced artists alike. Each artist can expect to complete one painting during the workshop.



You will need to have good reference material. Please bring pictures, photos of your chosen subject. Reasonably strong side or three quarter lighting is best- please no flash photography as we will be needing the directional light to develop the tonal variations. Sit your subject beside a window to get the kind of lighting we need.

Please do NOT bring your images on an iPad, Smartphone or similar device, we need a hard copy printed out on photo quality paper to work with, at A4 or A5 size.



Acrylics Portraiture Workshop Materials List

Texture and Glaze mediums are available at Arts Tree

Arts Tree has a range of Atelier Interactive Acrylic paints, gesso, texture paste, impasto gel medium, glaze medium, Arts Spectrum Inks & mediums and fan brushes available for purchase by Arts Tree students only.

When purchasing paint and mediums, please stay away from the cheapie brand with the faux French name- while Mont Marte brushes, knives and canvases are fine, their paints and mediums will not do the things we will ask of them.

Linen Canvas no larger than 91 x 61 cm- ready stretched on a timber stretcher or canvas covered board. Make sure you get one primed with transparent gesso- you need to be able to see the colour of the linen on the painting surface.

OR

Prime your regular canvas no larger than 91 x 61 cm with a mixture of white gesso, raw umber, and olive green to approximate the colour of linen. Do two smooth coats, to make sure you have a smooth surface. This is not the time to re-use a previously painted canvas- we want the surface smooth. Then when dry, protect your paint layer with a layer of binder medium.

Translucent or transparent gesso.

Spray can of Workable Mat Fixative.

Artist's quality acrylic paint in Titanium White.

Brushes: a selection of sizes - make sure you have a few bigger ones, and especially a largish fan brush.

Willow Charcoal AND Compressed Charcoal.

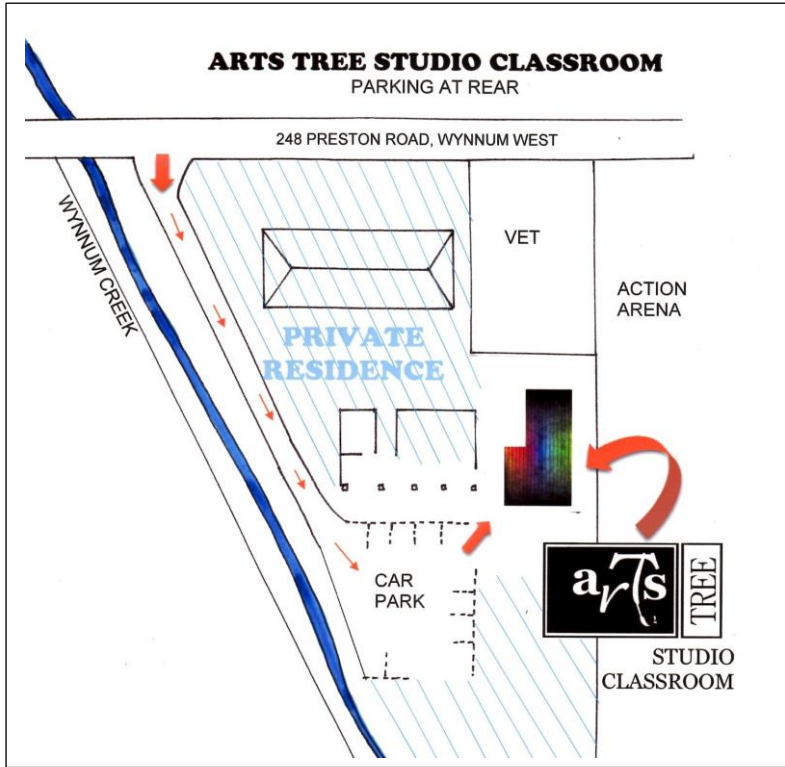
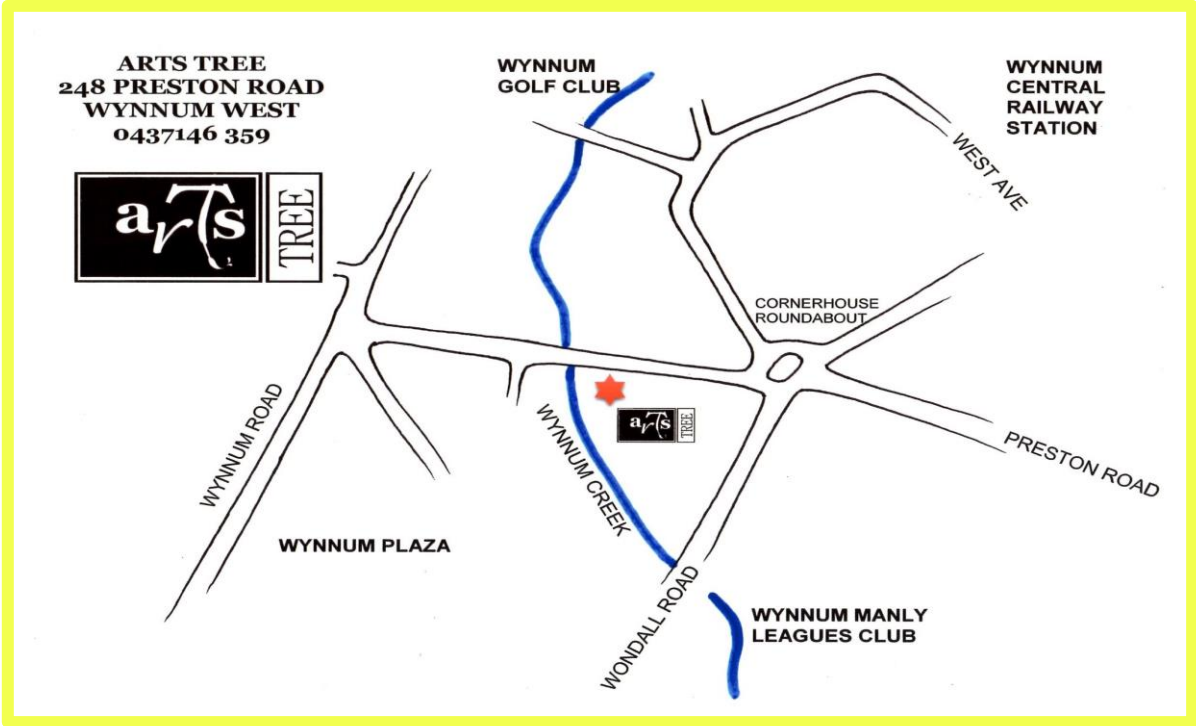
Pastels or conte crayons in earth tones. We can provide the use of these if you don't already have them.

A notebook and pen to take notes if you wish.

Reference Material

You will need good reference material as described above.

PLEASE NOTE: you will need to print out your images onto good quality photo paper. DO NOT bring your images only on an iPad, Smartphone or similar device. We need to be able to crop, twist and draw on the printed image. It is very useful to also have an A5 black & white photocopy of your reference image to assist with drawing.



Here's where you find us!

**248
Preston Road
Wynnum West**

Onsite parking at rear

Gates open 30mins before the Workshop

Next door to Wynnnum Bayside Vet Clinic & Action Arenas Indoor Sports Centre

Right beside Wynnnum Creek

www.artstree.com.au



0437 146 359